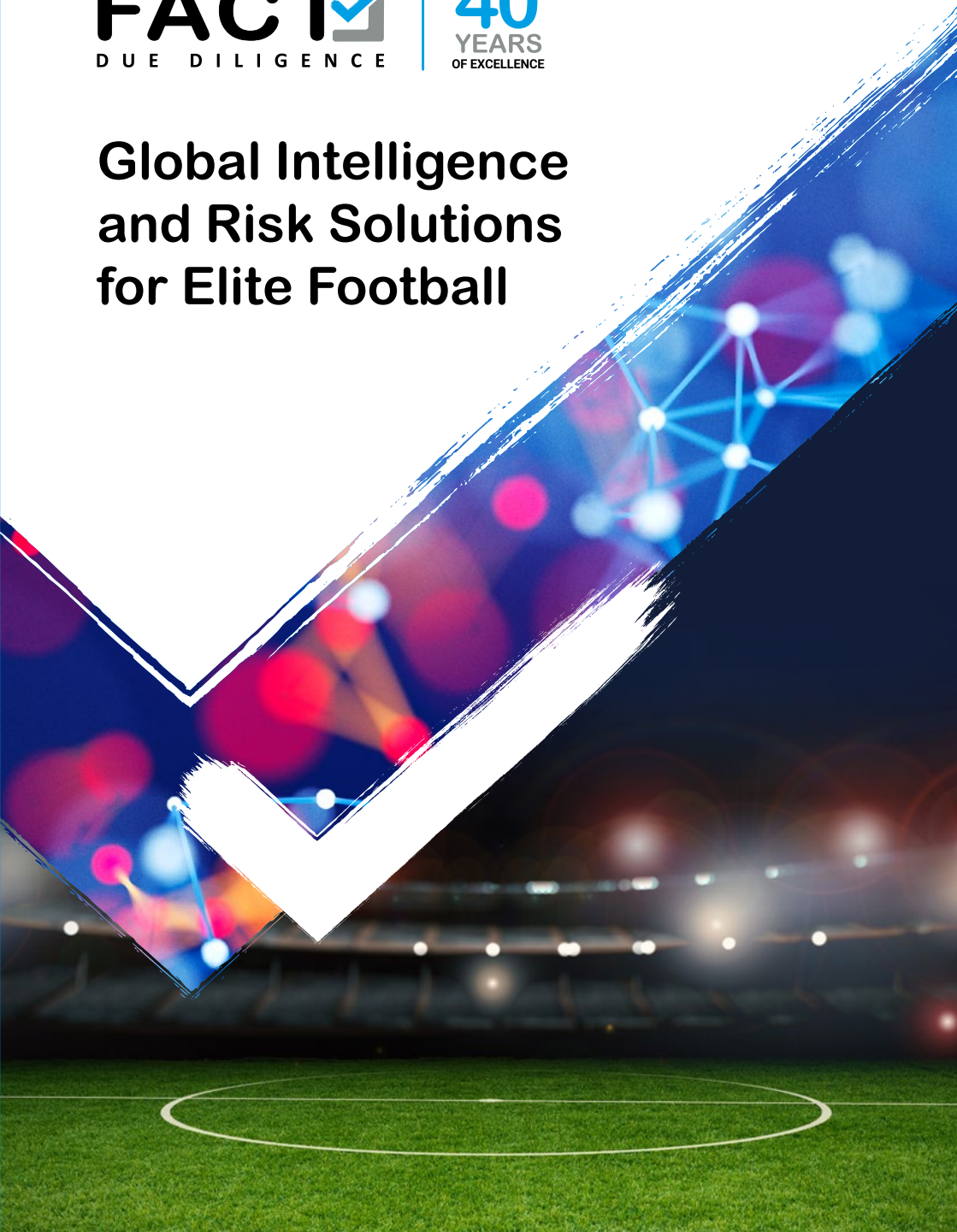


FACT 
DUE DILIGENCE

40
YEARS
OF EXCELLENCE

Global Intelligence and Risk Solutions for Elite Football



Elite football is driven by results, both on and off the pitch. A club's health and success are underpinned by active best practices around its commercial activities. Poorly informed decisions on personnel recruitment, transactions and investments can have critical implications.

With four decades of investigative experience, FACT are trusted by global media, banking & investment, law firms, and governments to support key decision-making on acquisitions, investments, and partnership agreements.

How do we do this? Through expert analysis, providing detailed reports that penetrate beyond the surface layers of information to help you identify, mitigate, and understand commercial and reputational risks.

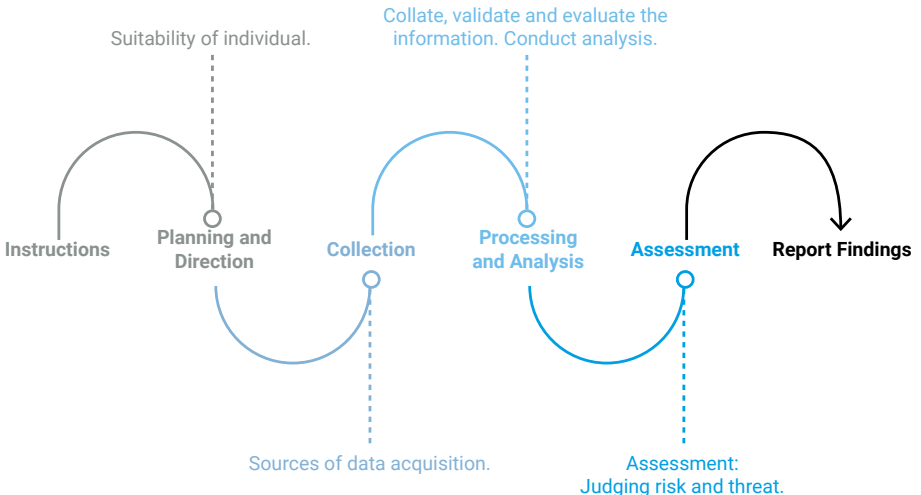
Our Scope of Research and Methodology

You will have access to a specialised network of football intelligence contacts, worldwide. This provides our clients with a unique advantage of quality and quantifiable intelligence, through our profiling and risk analysis expertise.

Independent and trusted tasked assets ensure confidentiality and impartiality, providing targeted intelligence that you can rely on to support informed decision-making, without compromise.

Intelligence Profiling and Risk Analysis

Our intelligence process enables you to make informed decisions with the following information:





Personality and Character Analysis

Identify and contextualise positive, neutral, and negative traits



Lifestyle and Culture

Conduct a full environmental and lifestyle analysis, coupled with threat assessments



Values, Beliefs, and Behaviours

Monitor alignment with organisational culture and ethical standards



Relationships

Provide context on family, associates, and influences while pinpointing potential red flags



Social Media Analysis and Insights

Identify social media accounts and analyse activity, trends, and interactions

Why work with us?

Status and Reputation

- ✓ 40 years of success and expertise
- ✓ Strong global reputation
- ✓ Proven track record of success

Expertise

- ✓ Specialist country knowledge through global network
- ✓ Data collection reviewed by expert analysts
- ✓ Capability in over 40 languages

Client Service

- ✓ Comprehensive high-quality due diligence reports
- ✓ Bespoke service to meet client needs
- ✓ Collaborative approach

Get in touch



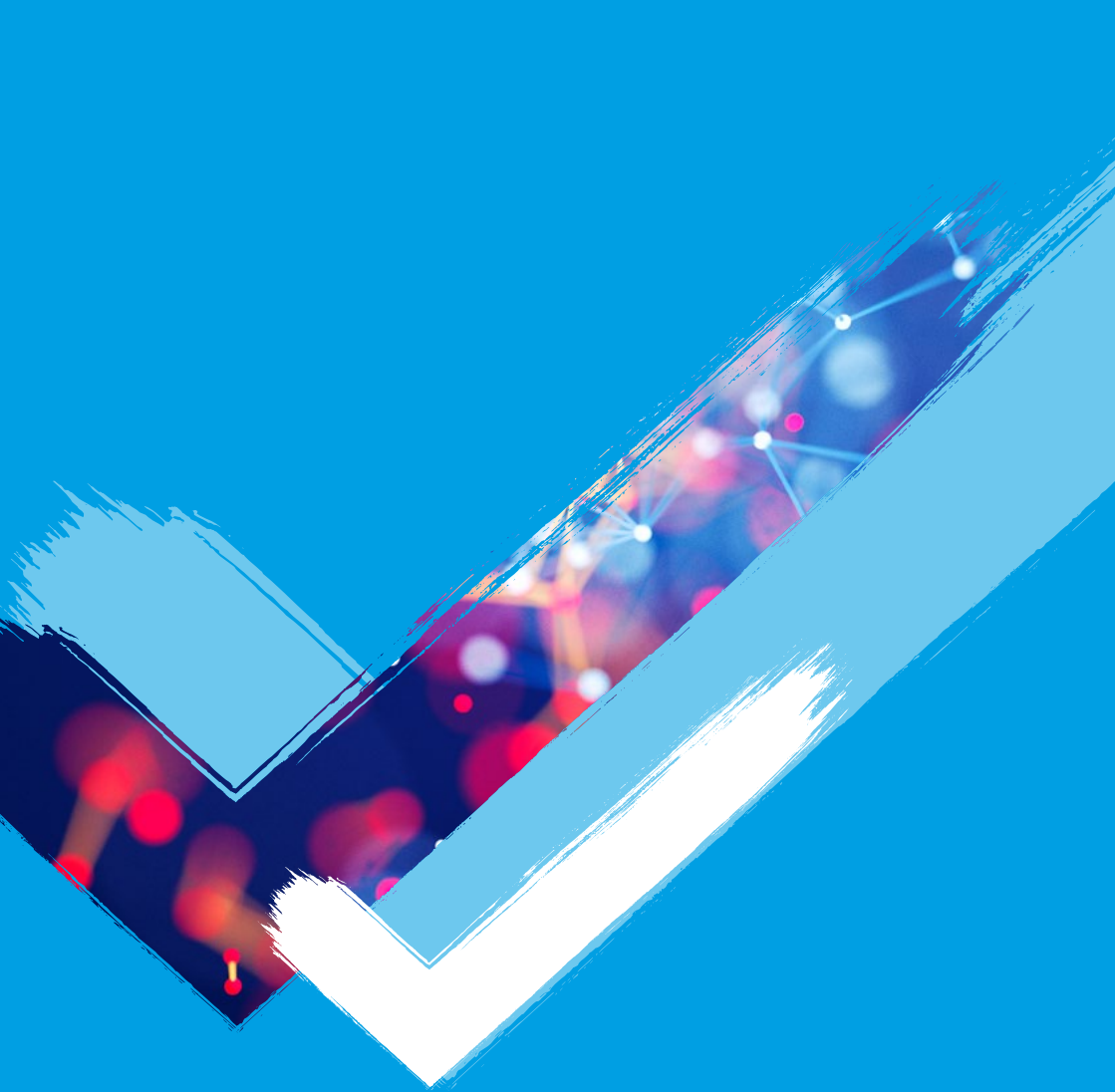
Neil Whitbread **Investigations Manager**

✉ neil.whitbread@fact-uk.org.uk

☎ +44 (0)20 8843 8524

📱 +44 (0)7825 890675

🌐 **FACT-uk**



FACT 
DUE DILIGENCE

40
YEARS
OF EXCELLENCE

www.fact-uk.org.uk